



# BRD3 Polyclonal Antibody

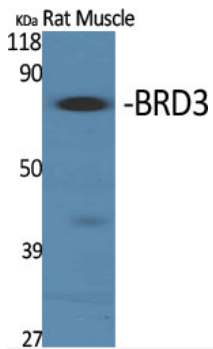
<b>Catalog No</b>	YP-Ab-16665
<b>Isotype</b>	IgG
<b>Reactivity</b>	Human;Mouse
<b>Applications</b>	WB;IHC;IF;ELISA
<b>Gene Name</b>	BRD3
<b>Protein Name</b>	Bromodomain-containing protein 3
<b>Immunogen</b>	The antiserum was produced against synthesized peptide derived from human BRD3. AA range:611-660
<b>Specificity</b>	BRD3 Polyclonal Antibody detects endogenous levels of BRD3 protein.
<b>Formulation</b>	Liquid in PBS containing 50% glycerol, 0.5% BSA and 0.02% sodium azide.
<b>Source</b>	Polyclonal, Rabbit,IgG
<b>Purification</b>	The antibody was affinity-purified from rabbit antiserum by affinity-chromatography using epitope-specific immunogen.
<b>Dilution</b>	Western Blot: 1/500 - 1/2000. Immunohistochemistry: 1/100 - 1/300. Immunofluorescence: 1/200 - 1/1000. ELISA: 1/20000. Not yet tested in other applications.
<b>Concentration</b>	1 mg/ml
<b>Purity</b>	≥90%
<b>Storage Stability</b>	-20°C/1 year
<b>Synonyms</b>	BRD3; KIAA0043; RING3L; Bromodomain-containing protein 3; RING3-like protein
<b>Observed Band</b>	90kD
<b>Cell Pathway</b>	Nucleus . Detected on chromatin. .
<b>Tissue Specificity</b>	Ubiquitous.
<b>Function</b>	disease:A chromosomal aberration involving BRD3 is found in a rare, aggressive, and lethal carcinoma arising in midline organs of young people. Translocation t(15;9)(q14;q34) with NUT which produces a BRD3-NUT fusion protein.,similarity:Contains 2 bromo domains.,tissue specificity:Ubiquitous.,
<b>Background</b>	This gene was identified based on its homology to the gene encoding the RING3 protein, a serine/threonine kinase. The gene localizes to 9q34, a region which contains several major histocompatibility complex (MHC) genes. The function of the encoded protein is not known. [provided by RefSeq, Jul 2008],
<b>matters needing attention</b>	Avoid repeated freezing and thawing!



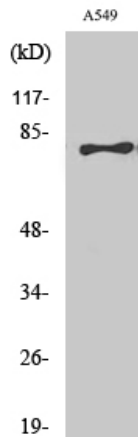
## Usage suggestions

This product can be used in immunological reaction related experiments. For more information, please consult technical personnel.

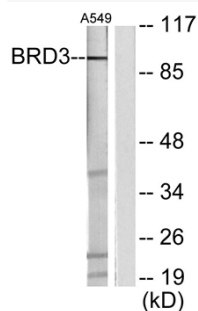
## Products Images



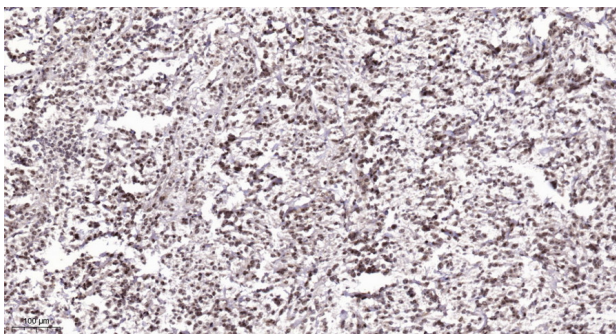
Western Blot analysis of various cells using BRD3 Polyclonal Antibody cells nucleus extracted by Minute TM Cytoplasmic and Nuclear Fractionation kit (SC-003, Inventbiotech, MN, USA).



Western Blot analysis of A549 cells using BRD3 Polyclonal Antibody cells nucleus extracted by Minute TM Cytoplasmic and Nuclear Fractionation kit (SC-003, Inventbiotech, MN, USA).



Western blot analysis of lysates from A549 cells, using BRD3 Antibody. The lane on the right is blocked with the synthesized peptide.



Immunohistochemical analysis of paraffin-embedded human Colon cancer. 1, Antibody was diluted at 1:200 (4° overnight). 2, Tris-EDTA, pH9.0 was used for antigen retrieval. 3, Secondary antibody was diluted at 1:200 (room temperature, 45min).